

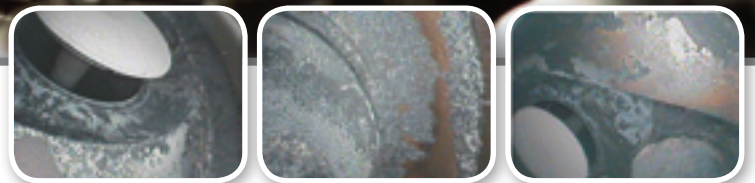


Small Engine Case Study

SMALL ENGINE INSPECTION

A small engine repair shop needed a borescope, primarily to conduct engine and valve inspections. The instrument had to be small and portable, had to articulate in order to view inside of the combustion chamber, piston dome and valves, and it had to have image capture capability. The VJ-ADV from RF System Lab was selected because it met all of these requirements.

In addition to saving time on diagnosing engine problems, the VJ-ADV has also helped increase business by allowing the customer to see images of the problem with their engine instead of just taking the mechanics word for it. Also, customers are impressed by the technology, raising their confidence in this repair shop to get the job done right.



Precise thumb control allows for full movement in all directions



Precise thumb control allows for full movement in all directions



Four Way - 360° Articulation



2.8mm 3.9mm 6.9mm

Three insertion tube dimensions available