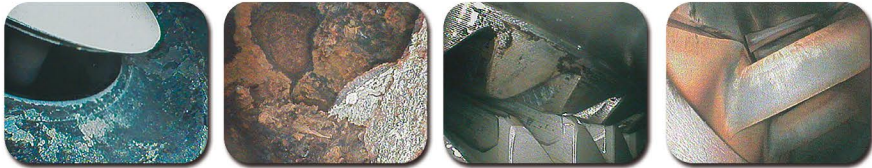




# VJ-ADV ARTICULATING VIDEO BORESCOPIES



## ARTICULATING VIDEO BORESCOPE INTRODUCING THE **VJ-ADV.**

The VJ-Advance (VJ-ADV) delivers all of the features you would expect in a high-end videoscope designed at a price that is easy to afford. Now available with an ultra-thin 2.8mm diameter insertion tube. The VJ-ADV from RF System Lab is ideally suited to accessing the smallest areas you need to inspect. Now you can test drive the VJ-ADV for free with our no obligation demo program! For more information on a free trial visit our website.



**RF SYSTEM lab.**

Traverse City, Michigan, USA 49684    CALL 231.943.1171    FAX 989.688.5966    VISIT [www.rfsystemlab.us](http://www.rfsystemlab.us)





# VJ-ADV ARTICULATING VIDEO BORESCOPIES



## VJ-ADVANCE FEATURES



### Details

4-Way Joystick Controlled Articulation

Pistol Grip Design

Built-In Full Color LCD Monitor

2.8mm, 3.9mm, or 6.9mm Insertion Diameter

Image, Video, and Audio Capture

Variable LED Illumination

Removable Micro SD Card Storage & USB Connectivity

Lengths Range From 1.0 To 5.0 Meters

## » DIRECT RESPONSE JOYSTICK ARTICULATION

Experience the revolutionary performance of an RF System Lab fully articulating video borescope. The VJ-Advance (VJ-ADV) was designed with the end user in mind. The direct mechanical drive articulation requires no calibration while providing the inspector with real time responsive feedback. To test drive the VJ-ADV for free simply signup with our no obligation demo program.

## VJ-ADVANCE BENEFITS



### True One Hand Operation.

The unique pistol grip design features 4-way joystick articulation that is intuitive to the user saving time on inspections. Simply pull the trigger for image capture. Easy to reach thumb buttons for video capture and brightness selection make performing inspections like second nature.



### Standalone Portability.

No need for a separate monitor here. Our lightweight compact design has a built-in full color LCD display. All image capture, storage, and processing is handled on-board the standalone unit. At just 23 ounces, the VJ-ADV is a truly portable all-in-one inspection tool.



### Versatile Design.

Now available in 2.8mm, 3.9mm, or 6.9mm insertion tube diameters. Insertion tubes range from 1.0 to 5.0 meter lengths making the VJ-ADV right for almost any application. Find out if the VJ-ADV is right for your application for free with our no obligation demo program.